



Hager Companies' Sliding Door Hardware offering is Simple, Dependable, and Highly Available

SLIDING DOOR Hardware Total Solutions

hagerco.com

SLIDING BARN DOOR HARDWARE



ECONESTOGA - ECONOMY SERIES BARN DOOR HARDWARE

Hager Companies' eConestoga flat track sliding door hardware is a decorative sliding door system with a rustic look and feel. Ideal for multi-family units, hotels, and office spaces, Hager's eConestoga flat track sliding door hardware system is available with two styles of door hangers to complement the decor.

PRODUCT INFORMATION

Materials:

- Durable powder-coated steel

System Includes:

- Black steel flat track (72" or 96")
- (2) Hangers
- (2) End stops
- (1) Floor mounted fin and channel guides
- (2) Anti-jump disks
- Track mounting hardware

Door Specifications:

- Wood doors up to 1-3/4" thick
- Door weight up to 250 lbs.

BENEFITS

- Purchased in complete sets - track rail included
- Accessories/Service parts available for customer accommodation
- Available in lengths: 72" & 96"
- Applications : Multi-Family
· Hospitality · Residential · Assisted Living

9456-72 & 9456-96 Top Mount



9457-72 & 9457-96 3" Face Mount



It's been more than 174 years since Charles Hager first started working in a blacksmith shop, and in that time span, we've grown from forging wheel rims for Conestoga wagons to offering more than 6,000 door hardware products. Today, the products created by Hager Companies can be found all over the world, and for good reason: they're built to last.

9400 SERIES - STAINLESS STEEL DOOR HARDWARE

A smart contemporary way to hang sliding glass or wood doors for commercial and residential openings where space is limited

PRODUCT INFORMATION

Materials:

- 304 stainless steel track and hangers with nylon coated rollers

System Includes:

- Stainless steel round track (78-3/4" or 96")
- (2) Hangers
- (2) End stops
- (1) Floor guide
- (2) Anti-jump disks
- Track mounting hardware

Standards:

- Meets performance requirements of ANSI/BHMA 156.14 (Grade 1) for sliding doors exceeding 100,000 cycles

Door Specifications:

- Door weight up to 250 lbs.
- 9432 & 9436 for wood doors 1-3/8" & 1-3/4" thick
- 9436 for glass doors 5/16"-1/2" thick

Applications:

- Commercial • Multi-Family • Hospitality • Residential • Office

HEADLINERS

- Stainless steel track and hangers with gliders on nylon coated rollers
- For wood or glass doors weighing up to 250 lbs.

ADVANTAGES

- Ergonomically designed
- Space saving solution
- Architecturally appealing

Round Rail Track Top-Mount
Hanger for Wood Doors

9432 Top Mount Stick



Round Track Face-Mount Hanger
for Wood or Glass Doors

9436 Face Mount

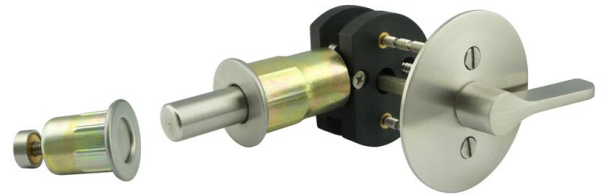


9458 BARN DOOR PRIVACY LOCK

Perfect for multi-family, assisted living facilities, and hospitality markets

Product Specifications :

- Bolt diameter: 1/2" (13 mm)
- Bolt: stainless steel latch bolt
- ADA compliant
- Material: brass / stainless steel
- For 1-3/8" to 2-1/4" thick doors
- Backset: 2-1/4" or 3-1/2"
- Strike: 1-1/4" diameter spring-loaded / dust proof



Complements the 9400 Stainless Steel and eConestoga Series Sliding Door Hardware

9459 SURFACE JAMB MOUNT

Perfect for multi-family, assisted living facilities, and hospitality markets

Product Specifications :

- Bolt diameter: 1/2" (13 mm)
- Bolt: stainless steel latch bolt
- ADA compliant
- Material: stainless steel / cast alloy
- For 1-3/8" to 2" thick doors
- Thumb turn: 1-9/16" ADA
- Strike: adjustable / dust proof



Complements the 9400 Stainless Steel and eConestoga Series Sliding Door Hardware



SLIDING DOOR WALL MOUNT

9710HD SERIES WALL-MOUNT SLIDING DOOR HARDWARE

Architecturally-designed wall-mount system for commercial or residential spaces

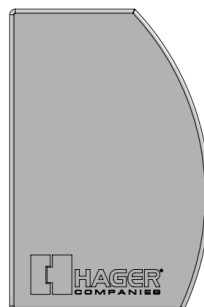
Hager Companies' wall-mount sliding door hardware is designed to blend seamlessly with any interior décor — from a contemporary uptown loft, to a more traditional environment. This architecturally-focused design delivers a clean, finished look to any interior doorway or room divider (from two to six foot openings) while providing maximum space utilization. Hager's 9710HD Wall-Mount system is available in clear anodized and black finishes. Quiet four-wheel ball bearing carriers support doors up to 250 lbs. Hardware supports one- and two-door applications.

Product Specifications :

- Available sizes: 72" (1829 mm), 96" (2438 mm), 144" (3658 mm)
- For 1-1/8" to 1-3/4" thick doors
- Maximum door weight: up to 250 lbs.
- Finishes: Available in clear anodized & black
- Optional soft-close (1-269-8651) for doors up to 150 lbs.
- Meets performance ANSI/BHMA A156 14 (Grade 1) for sliding doors exceeding 100,000 cycles

Applications :

- 9710HD-72 - 72" (1829 mm) for 1 door
- 9710HD-96 - 96" (2438 mm) for 1 door
- 9710HD-144 - 144" (3658 mm) for 1 door or 2 doors



End caps now include Hager Companies embossed logo

POCKET DOOR HARDWARE



9878CS & 9878HD POCKET DOOR KITS (FRAMING NOT INCLUDED)

Pocket door aka “doors that vanish”— Hager Companies offers innovative design options for saving space and complementing classic and contemporary decors. Hager’s pocket-door hardware is ideal for single and bi-parting pocket-door configurations in rough openings from six to sixteen feet. Aluminum tracks support doors up to 250 lbs. and are designed for simple installation and durable performance. Hager’s 4-wheel hanger design provides an ultra-smooth gliding movement.

POCKET DOOR KITS

9878CS:

- Door weight up to 150 lbs.
- Door thickness from 1-1/8" - 1-3/4"
- Track is extruded aluminum jump-proof style with “V” shaped rails
- Available in lengths: 72" & 96"
- Meets performance requirements ANSI/BHMA A156.14 (Grade 1) for sliding doors by exceeding 100,000 cycles
- Optional soft-close (1-269-8651) for doors up to 150 lbs.

9878HD :

- Door weight up to 250 lbs.
- Door thickness from 1-1/8" - 1-3/4"
- Track is extruded aluminum jump-proof style with “V” shaped rails
- Available in lengths: 72" & 96"
- Meets performance requirements ANSI/BHMA A156.14 (Grade 1) for sliding doors by exceeding 100,000 cycles



POCKET DOOR FRAME KITS



9600 SERIES COMMERCIAL POCKET DOOR FRAME KITS

PRODUCT INFORMATION

- V-groove jump proof aluminum track
- Pre-assembled header goes up quickly
- Real wood split studs, size 3/4" x 1-3/4" width relative to length, steel encased for rigidity and to prevent fastener penetration into the pocket
- 2 pairs of split studs with wood inserts
- Optional soft-close (1-269-8651) for doors up to 150 lbs.

CERTIFICATIONS

- Meets performance requirements ANSI/BHMA A156.14 (Grade 1) for sliding doors by exceeding 100,000 cycles
- Type: D02311-150
- ADA compliant

| | 9628CS | 9629CS | 9630CS | 9631CS |
|--------------------------------|-------------------------------------|-------------------------------------|-------------------------------------|-------------------------------------|
| MAX DOOR WEIGHT | 150 lbs. (68 KG) | 150 lbs. (68 KG) | 150 lbs. (68 KG) | 150 lbs. (68 KG) |
| DOOR THICKNESS | 1-1/8" - 1-3/4" (29MM-44MM) | 1-1/8" - 1-3/4" (29MM-44MM) | 1-1/8" - 1-3/4" (29MM-44MM) | 1-1/8" - 1-3/4" (29MM-44MM) |
| DOOR HEIGHT & WIDTH | H: 9'0" (2743MM) W: 3'0" (914MM) | H: 8'0" (2438MM) W: 3'0" (914MM) | H: 7'0" (2134MM) W: 3'0" (914MM) | H: 6'8" (2032MM) W: 3'0" (914MM) |
| HANGER | 9805 | 9805 | 9805 | 9805 |

For doors in excess of **150 lbs.** we recommend the use of our 9850HD or 9852HD Pocket Door kits.

9800 SERIES HEAVY-DUTY POCKET DOOR FRAME KITS

PRODUCT INFORMATION

- For doors 1-1/8" - 1-3/4" thick weighing up to 250 lbs.
- Pre-assembled header assembly goes up quickly
- Heavy-duty, V-groove jump proof aluminum track
- Real wood split studs, size 3/4" x 1-3/4" width relative to length, steel encased for rigidity and to prevent fastener penetration into the pocket

CERTIFICATIONS

- Meets performance requirements ANSI/BHMA A156.14 (Grade 1) for sliding doors by exceeding 100,000 cycles
- Type: D01311-250
- ADA compliant

| | 9850HD-102 | 9850HD-96 | 9852HD-84 | 9852HD-80 |
|--------------------------------|--------------------------------------|--------------------------------------|--------------------------------------|--------------------------------------|
| MAX DOOR WEIGHT | 250 lbs. (113 KG) | 250 lbs. (113 KG) | 250 lbs. (113 KG) | 250 lbs. (113 KG) |
| DOOR THICKNESS | 1-1/8" - 1-3/4" (29MM-44MM) | 1-1/8" - 1-3/4" (29MM-44MM) | 1-1/8" - 1-3/4" (29MM-44MM) | 1-1/8" - 1-3/4" (29MM-44MM) |
| DOOR HEIGHT & WIDTH | H: 8'6" (2591MM) W: 4'0" (1219MM) | H: 8'0" (2438MM) W: 4'0" (1219MM) | H: 7'0" (2134MM) W: 4'0" (1219MM) | H: 6'8" (2032MM) W: 4'0" (1219MM) |
| HANGER | 9806 BALL BEARING | 9806 BALL BEARING | 9806 BALL BEARING | 9806 BALL BEARING |



BI-FOLD SETS

BI-FOLD DOOR HARDWARE

Simple to Install, Built to Last

The better engineered your Bi-Fold door hardware is, the smoother the operation of your doors will be—over the lifetime of the installation. Smart Homeowners, Contractors, and Architects insist on Hager's sliding hardware sets and components to ensure trouble-free installation and reliable performance.

9570RC

PRODUCT INFORMATION

- Door weight up to 125 lbs. per panel pair
- Door thickness from 1-1/8" - 1-3/4"
- Track is extruded aluminum jump-proof style with "V" shaped rails

System Includes:

- Aluminum track
- Parts bag

Applications:

- Commercial · Healthcare · Hospitality · Residential · Office

Available in lengths:

- 36", 48", 60", 72"96"





BY-PASS PACKED SETS

BY-PASS PACKAGED SETS

Hager offers a full-range of trouble-free, sturdy, and quiet motion by-pass Sliding Door Hardware sets. Featuring heavy-duty aluminum tracks, Hager's by-pass packaged sets can be ordered for to fit openings from 4 ft. to 8 ft. wide. Hager's Sliding Door Hardware sets are built to last and simple to install. They support doors from 60 lbs. to 250 lbs. and offer an ideal space-saving solution for closets, pantries, room-dividing doors, etc.

9611CS

9611HD

PRODUCT INFORMATION

- Door weight up to 150 lbs. per door
- Door thickness from 1-3/8" or 1-3/4"
- Quick-release hangers allow for easy door hanging and removal
- Optional soft-close (1-269-8651) for doors up to 150 lbs.

System Includes:

- (2) Aluminum tracks
- (4) 4-wheel hangers
- (1) Floor channel door guide
- (2) Flush cup pulls
- Parts bag

Applications:

- Commercial · Healthcare · Hospitality · Office

Available in lengths:

- 48", 60", 72", 96"

Certifications:

- Meets performance requirements ANSI/ BHMA A156.14 (Grade 1) for sliding doors by exceeding 100,000 cycles
- Type D02411-250

PRODUCT INFORMATION

- Door weight up to 250 lbs. per door
- Door thickness from 1-3/8" or 1-3/4"
- Quick-release hangers allow for easy door hanging and removal

System Includes:

- (2) Aluminum tracks
- (4) 4-wheel hangers
- (1) Floor channel door guide
- (2) Flush cup pulls
- Parts bag

Applications:

- Commercial · Healthcare · Hospitality · Office

Available in lengths:

- 48", 60", 72", 96"

Certifications:

- Meets performance requirements ANSI/ BHMA A156.14 (Grade 1) for sliding doors by exceeding 100,000 cycles
- Type D02411-250

9613RS NON-FASCIA

9614RS FASCIA

PRODUCT INFORMATION

- Door weight up to 60 lbs. per door with single wheel hanger
- Door thickness 3/4"-1-3/8"
- Track is extruded aluminum with "V" shaped rails
- Optional soft-close (1-269-8651) for doors up to 150 lbs.

System Includes:

- Aluminum track
- (4) 1-wheel hangers
- (2) Flush cup pulls
- (1) Floor channel door guide
- Parts bag

Applications:

- Commercial · Healthcare · Hospitality · Office · Residential

Available in lengths:

- 48", 60", 72", & 96"

Certifications:

- Meets performance requirements ANSI/BHMA A156.14 (Grade 1) for sliding doors by exceeding 100,000 cycles
- Type D02411-60

PRODUCT INFORMATION

- Door weight up to 60 lbs. per door with single wheel hanger
- Door thickness 3/4"-1-3/8"
- Track is extruded aluminum with "V" shaped rails
- Grooved fascia
- Optional soft-close (1-269-8651) for doors up to 150 lbs.

System Includes:

- Aluminum track with fascia
- (4) 1-wheel hangers
- (2) Flush cup pulls
- (1) Floor channel door guide
- Parts bag

Applications:

- Commercial · Healthcare · Hospitality · Office · Residential

Available in lengths:

- 48", 60", 72", & 96"

Certifications:

- Meets performance requirements ANSI/BHMA A156.14 (Grade 1) for sliding doors by exceeding 100,000 cycles
- Type D02411-60

SIMPLE, DEPENDABLE, HONEST, - HAGER COMPANIES SLIDING DOOR HARDWARE

In our effort to streamline our SDH offering and make it easier to do business with Hager, we have enhanced quality and performance and significantly reduced leads times. As part of this new consolidated line, and for your convenience, we have created a quick cross-reference guide to highlight the changes.

| | CONSOLIDATED SERIES | NEW PART NUMBER |
|------------------|------------------------------|--|
| BI-FOLD SET | 9570, 9860, 9861, 9890, 9891 | 9570RC |
| BY-PASS SET | 9675, 9676, 9611, 9110 | 9611CS |
| | 9130, 9612, 9875 | 9611HD |
| | 9673, 9674 | 9611CS (Add optional 9622 fascia) ¹ |
| | 9885 | 9611HD (Add optional 9622 fascia) ² |
| | 9514, 9583 | 9613RS |
| | 9614, 9683 | 9614RS |
| WALL MOUNT SET | 9710 | 9710HD |
| POCKET DOOR SETS | 9678, 9110 | 9878CS |
| | 9878, 9130, 9901 | 9878HD |

PLEASE READ - The components between new and previous versions are NON-INTERCHANGEABLE

Note 1: The 9611CS (150 LBS.) Bypass Set with the optional 9622 Fascia becomes the equivalent to previous version 9673 and 9674. The components between new and previous versions are non-interchangeable.

Note 2: The 9611HD (250 LBS.) Bypass Set with the optional 9622 Fascia becomes the equivalent to previous version 9885. The components between new and previous versions are non-interchangeable.

CROSS REFERENCE

| HAGER COMPANIES | JOHNSON HARDWARE | NGP | PEMKO ASSA ABLOY | K.N. CROWDER MFG. INC. |
|--|------------------|----------------------|-------------------|------------------------|
| E-CONESTOGA FLAT RAIL BARN DOOR | | | | |
| 9456 Top Mount (72" & 96") | * | * | BLD-FT02 | * |
| 9457 Face Mount (72" & 96") | * | * | BLD-FT01 | * |
| 9400 SERIES - STAINLESS STEEL DOOR HARDWARE | | | | |
| 9432 Top Mount (78" & 96") | * | SLSS1 | W60 | * |
| 9436 Side Mount (78" & 96") | * | SLSS2 | W100 | * |
| 9710 SERIES - WALL MOUNT SLIDING DOOR HARDWARE | | | | |
| 9710HD (72", 96", 144") | * | * | * | * |
| BI-FOLD DOOR HARDWARE | | | | |
| 9570RC | 100FS / 111FD | SLAL-75-BF | HF2/100A-HF4/100A | CF-100 |
| BY-PASS PACKAGED SETS | | | | |
| 9613RS | 2200 | SLAL-75-BP | * | C-600 |
| 9613RS | 2200F | SLAL-75-BPF | * | * |
| 9614RS | 2204F | | * | * |
| 9611HD | 100SM | SLAL-250-BP | * | C-500 |
| 9611CS | * | * | * | C-548 |
| 9878CS & 9878HD POCKET DOOR KITS (FRAMING NOT INCLUDED) | | | | |
| 9878HD | 100PD | SLAL-250-PD | H200A | C-411 |
| 9878CS | 111PD | * | * | * |
| BY-PASS PACKAGED SETS | | | | |
| 9630CS | 1500PF | SLAL-250-PDKIT | PF28200A6080 | TYPE B |
| 9631CS | 152868HD | * | PF28200A7280 | * |
| 9628CS | 152080HD | SLAL-250-PDKIT-EXT | PF28200A6096 | * |
| 9629CS | 152880HD | * | PF28200A7296 | * |
| 9850HD | 153680HD | SLAL-250-PDKT-EXT-48 | PF28200A9696 | * |
| 9852HD | 15602668 | SLAL-250-PDKIT-6 | PF28200A6080-2X6 | TYPE C -2X6 |



hagerco.com

To slide or not to slide...this shouldn't be a question – Hager Companies has all of your sliding door hardware readily available to ship from any of Hager's global distribution centers

Corporate Office
139 Victor Street
St. Louis, Missouri 63104
www.hagerco.com
(800)-255-3590